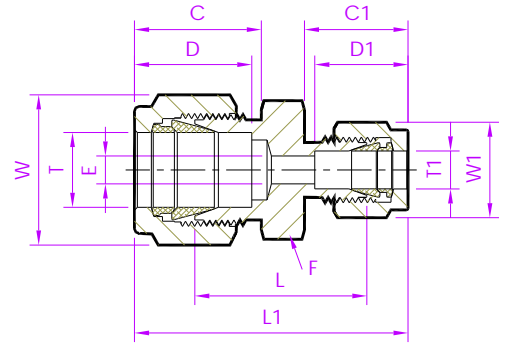


- Tube Fitting (Double Ferrule)-  
Tube To Tube

# Reducer Union



Fractional Tube x Fractional Tube

TubeFit Part No.	Equivalent Part No. Type 1	Equivalent Part No. Type 2	TUBE OD Ø T	TUBE OD Ø T1	ØE	D	C	D1	C1	L	L1	Body Hex F	Nut Hex W	Nut Hex W1
Dimensions in Inches														
2 - RUD - 1	- 200 - 6 - 1	2RU1	1/8	1/16	0.05	0.50	0.60	0.34	0.43	0.76	1.22	7/16	7/16	5/16
3 - RUD - 1	- 300 - 6 - 1	3RU1	3/16	1/16	0.05	0.54	0.63	0.34	0.43	0.81	1.27	7/16	1/2	5/16
3 - RUD - 2	- 300 - 6 - 2	3RU2		1/8	0.09			0.50	0.60	0.92	1.44	7/16		7/16
4 - RUD - 1	- 400 - 6 - 1	4RU1	1/4	1/16	0.05	0.60	0.70	0.34	0.43	0.80	1.35	9/16	9/16	5/16
4 - RUD - 2	- 400 - 6 - 2	4RU2		1/8	0.09			0.50	0.60	0.97	1.52	9/16		7/16
4 - RUD - 3	- 400 - 6 - 3	4RU3		3/16	0.12			0.54	0.63	1.00	1.55	9/16		1/2
5 - RUD - 2	- 500 - 6 - 2	5RU2	5/16	1/8	0.09	0.64	0.73	0.50	0.60	1.01	1.56	5/8	5/8	7/16
5 - RUD - 4	- 500 - 6 - 4	5RU4		1/4	0.19			0.60	0.70	1.08	1.66	5/8		9/16
6 - RUD - 1	- 600 - 6 - 1	6RU1	3/8	1/16	0.05	0.66	0.76	0.34	0.43	0.95	1.44	11/16	11/16	5/16
6 - RUD - 2	- 600 - 6 - 2	6RU2		1/8	0.09			0.50	0.60	1.06	1.61	11/16		7/16
6 - RUD - 4	- 600 - 6 - 4	6RU4		1/4	0.19			0.60	0.70	1.12	1.70	11/16		9/16
6 - RUD - 5	- 600 - 6 - 5	6RU5		5/16	0.25			0.64	0.73	1.16	1.74	11/16		5/8
8 - RUD - 2	- 810 - 6 - 2	8RU2	1/2	1/8	0.09	0.90	0.86	0.50	0.60	1.12	1.78	7/8	7/8	7/16
8 - RUD - 4	- 810 - 6 - 4	8RU4		1/4	0.19			0.60	0.70	1.16	1.85	7/8		9/16
8 - RUD - 6	- 810 - 6 - 6	8RU6		3/8	0.28			0.66	0.76	1.22	1.91	7/8		11/16
10 - RUD - 6	- 1010 - 6 - 6	10RU6	5/8	3/8	0.28	0.96	0.86	0.66	0.76	1.25	1.94	1	1	11/16
10 - RUD - 8	- 1010 - 6 - 8	10RU8		1/2	0.41			0.90	0.86	1.25	2.05	1		7/8
12 - RUD - 4	- 1210 - 6 - 4	12RU4	3/4	1/4	0.19	0.96	0.86	0.60	0.70	1.25	1.94	1.1/16	1.1/8	9/16
12 - RUD - 6	- 1210 - 6 - 6	12RU6		3/8	0.28			0.66	0.76	1.31	2.00	1.1/16		11/16
12 - RUD - 8	- 1210 - 6 - 8	12RU8		1/2	0.41			0.90	0.86	1.31	2.11	1.1/16		7/8
12 - RUD - 10	- 1210 - 6 - 10	12RU10		5/8	0.50			0.96	0.86	1.31	2.11	1.1/16		1
16 - RUD - 8	- 1610 - 6 - 8	16RU8	1	1/2	0.41	1.23	1.04	0.90	0.86	1.50	2.38	1.3/8	1.1/2	7/8
16 - RUD - 12	- 1610 - 6 - 12	16RU12		3/4	0.62			0.96	0.86	1.50	2.38	1.3/8		1.1/8

NOTE : 1)The E Dimension is the minimum opening. 2)Dimension L1, C, D, C1, D1 is shown in the finger-tight position.  
3)Dimensions are for reference only and are subject to change.

- ALL PART NUMBERS ARE PROPRIETARY OF THEIR RESPECTIVE OWNERS. -